

INNOVATION IN PLANNING PROGRAMS

@ Rowan University

Kevin Keenan, Ph.D., AICP

OUTLINE

- What do we mean by innovation?
- How are we innovating?
- Looking to the future, remembering the past



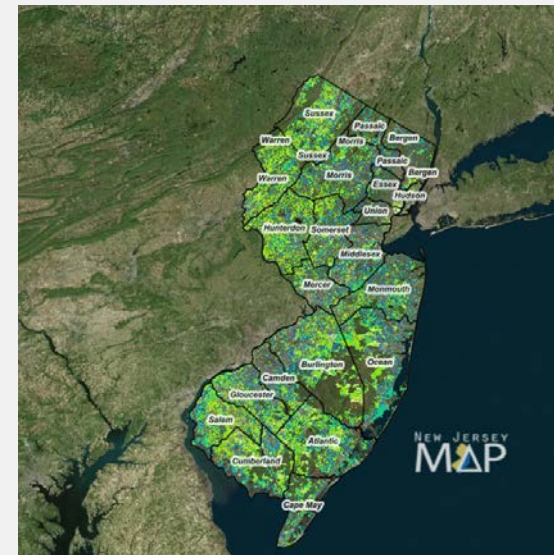
WHAT DOES IT MEAN TO INNOVATE?

- to introduce something new; make changes in anything established.
- *Latin: to renew, alter*



ESTABLISHED (TRADITIONAL) PLANNING @ ROWAN

- Bachelor of Science in Community & Environmental Planning
 - Core classes in the usual topics:
 - Foundations of Planning *and Environmental Design*
 - Metropolitan and Regional Planning
 - Land Use *and Conservation*
 - New Jersey Planning Practice
 - Community Planning and Site Design



RENEWAL

- The Advocacy Tradition *Today*
 - Established by Paul Davidoff in 1965
 - Founding chair of Urban Studies at Hunter College
 - “Advocacy and Pluralism in Planning” article in the Journal of the American Planning Association
 - Be honest about your values, and let them guide you in the practice
 - Original focus on social justice and equity

INNOVATION @ ROWAN PLANNING

- Innovation
 - Growing specializations in environmental and sustainability planning, including attention to planning for agriculture and food systems
 - Strong skill set in GIS
 - Students *are required* to intern



ADVOCACY @ ROWAN PLANNING

- Advocacy

About Project

Charting a Future for New Jersey's Lands and Waters



New Jersey is the most densely populated state in the United States, with studies estimating that full “build-out” will be reached by 2050. This means that our unprotected lands and forests will either be preserved or developed in the next 40 years.

The good news: Despite alarming development trends, land trusts, non-profits and government agencies have protected nearly 30 percent of the land and water that we depend on in New Jersey.

However, there are still 1.5 million acres of high quality, natural lands to be protected. The longer we wait to act, the greater the risk that some of these areas—which safeguard our drinking water, clean our air, maintain fertile soils for growing food, provide recreation and sustain wildlife—could be developed.

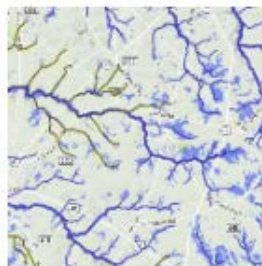


Maps

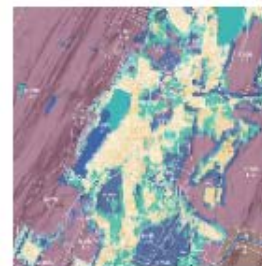
Blueprint Overview
Maps



Water Quality
Priorities



Ecological
Priorities



Agricultural
Priorities



Community Green
Space Priorities



All Priorities



THE GEOGRAPHICAL TRADITION

- Writing about the Earth
- One of the earliest traditions of knowledge (Greco-Roman)
- Infuses the planning practice with critical perspectives, human-environment focus





THE FUTURE

- Master of Science in Urban and Regional Planning
 - 2 specializations
 - Geospatial and Physical Planning
 - Environmental and Sustainability Planning
- Certificate of Undergraduate Study
 - Community Food and Health Planning

OUTLINE

- What do we mean by innovation?
- How are we innovating
- Looking to the future, remembering the past





Education, hope of the world

~Rowan University's Motto