

The N.J. Coastal Resilience Collaborative:

*Building Partnerships and Networks
to Advance Coastal Community Resilience*



NJCRC Co-Facilitators
are
New Jersey Sea Grant Consortium
Specialists

Dr. Tom Herrington
Monmouth University
therring@monmouth.edu



Dr. Jun Cheng
Kean University
jucheng@kean.edu



Laura Kerr
Stevens Institute of Technology
lkerr@stevens.edu



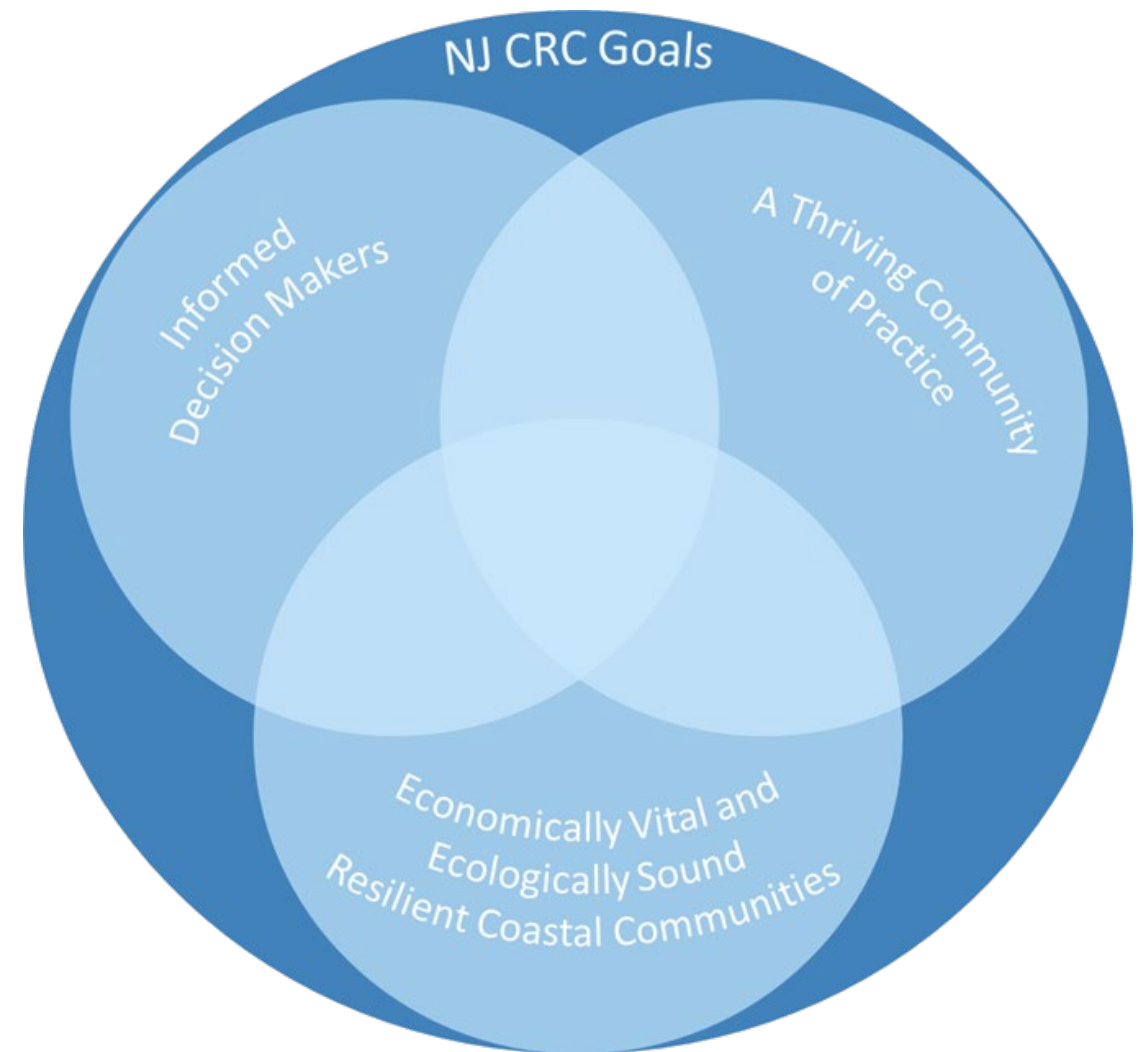


Mission

Professional network established to foster **sustainable and resilient coastal communities and ecosystems** by generating informed action.

Methods

By advancing **science** to inform **policy** and enable **community action**



New Jersey
Coastal
Resilience
Collaborative!

NJ

COASTAL
RESILIENCE
COLLABORATIVE



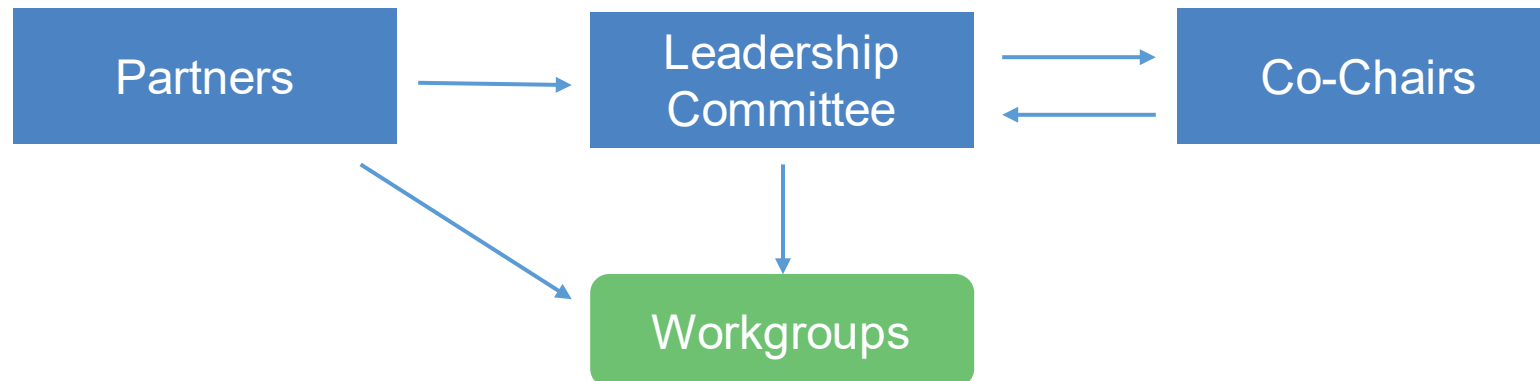
*Led By NJDEP from 2016 – Sept. 2019;
NJ Sea Grant from Oct. 2019 – Present*



NJCRC Operation and Structure

- A cross-sector, ***collective impact*** approach
- **Blend the actions, planning, outreach, and education of the individual member groups** to collectively pursue the common goal of fostering resilient coastal communities through generating informed action.

Structure



Our Partners

- 75+ partner organizations - from **all sectors**, including:
 - state, county and federal agencies,
 - **municipalities**,
 - state and private universities,
 - non-profit and **for-profit groups**,
 - national estuary programs and reserves,
 - advocacy groups,
 - and regional planning groups

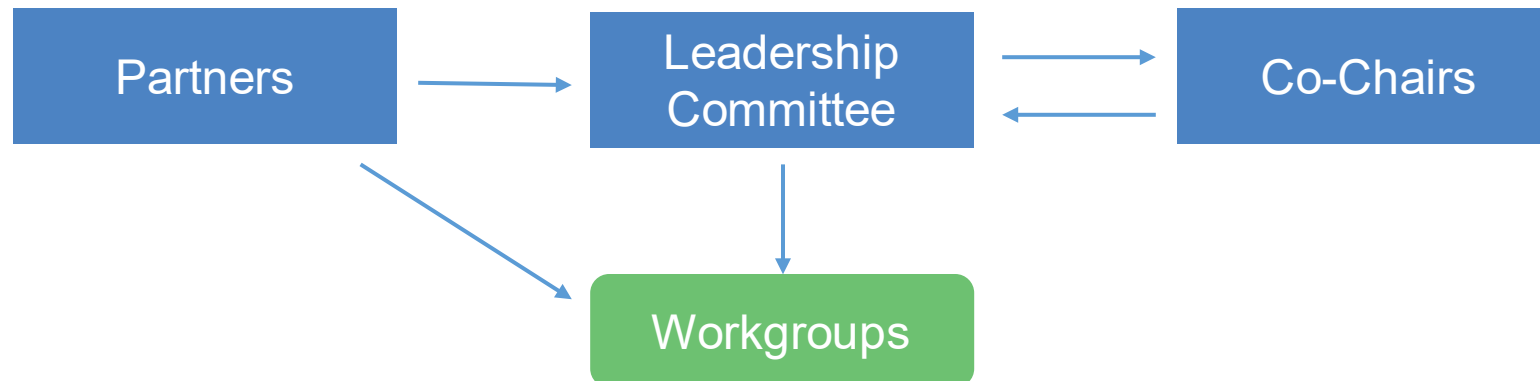
A Few of our Partners



NJCRC Operation and Structure

- A cross-sector, **collective impact** approach
- Blend the actions, planning, outreach, and education of the individual member groups to **collectively pursue the common goal** of fostering resilient coastal communities through generating informed action.

Structure



A scenic view of a coastal town with houses and a boat on the water. The foreground shows a body of water with a small boat carrying several people. In the middle ground, there is a grassy area and a bridge. In the background, a row of houses is visible along the shore.

NJCRC Workgroups: Partners Making Things Happen!



Workgroup Evolution

Workgroups are established by partners to focus on membership-identified priorities.

Initial Workgroups

- Science
- Communications
- Implementation



Revised Workgroups after NJCRC Established

- Municipal Essential Actions
- State Actions
- Ecosystem Restoration & Science



Post EO89 Workgroups

- Municipal Actions
- State Actions



ComputerHope.com

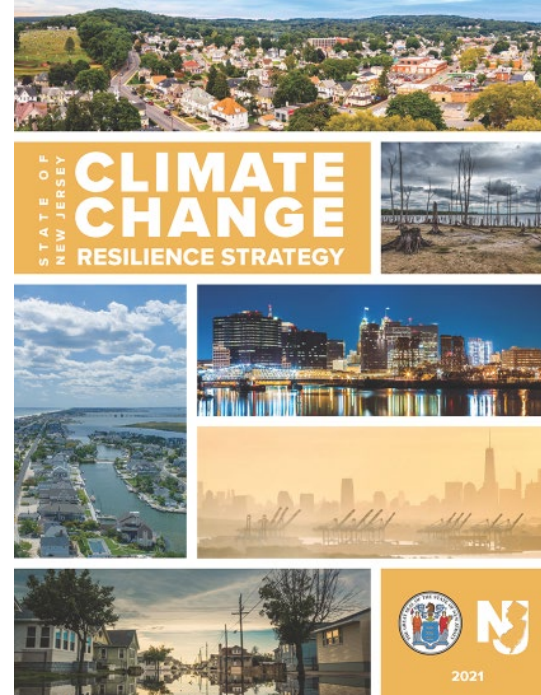
Informing Resilience Strategies

- Municipal and State Workgroups** formed subcommittees to review and **provide comments and recommendations** on the resilience priorities identified in the *Draft Climate Change Resilience Strategy and Coastal Resilience Plan*

State of New Jersey Draft Climate Change Resilience Strategy, April 2021
 New Jersey Coastal Resilience Collaborative (NJCRC) Comments
 May 2021

The Draft State of New Jersey Climate Change Resilience Strategy (the “Strategy”) and Coastal Resilience Plan (the “Plan”) released on April 22, 2021, focuses on strategies to protect, restore, and responsibly develop New Jersey’s diverse coastal communities and resources in light of the current and future impacts of climate change.

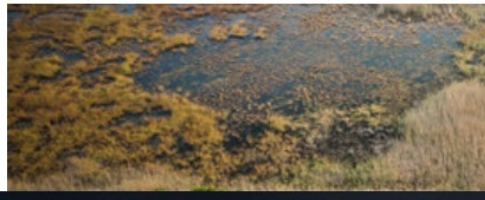
The Strategy and the Plan represent important first steps in providing a general framework, but the implementation steps to follow will be hard and will need to be specific and reflect the interconnectedness of natural systems, risks, ecology and community, and be supported by the resources needed by communities to support recommended actions.



Plan to be accepted, it needs to be understood by all of the state’s residents. Many communities do not have the wherewithal to investigate and analyze ties will be impacted. The NJCRC strongly supports the call for substantially assistance by NJDEP and other state agencies recommended in the Strategy, the Strategy the state provide a table of state programs along with tions and related actions suggested or required. In addition, the state is de a detailed breakdown of the climate survey results – for example, did private citizens from throughout the state? Also, more explicit explanations resident are needed; for example, it may be confusing to read that there reme rain events but also more frequent droughts.

Strategy and Plan in line with federal actions and scientific research, the eline should extend beyond 2050 and include consideration of longer-term d 2100.

PRIORITY 6: COASTAL RESILIENCE PLAN



STRATEGIES:

- 6.1 Incentivize and Support Community Resilience Planning**
- 6.2 Update Coastal Management Regulations and Policies to Reflect Sea-Level Rise and Other Climate Change Projections**
- 6.3 Sustain and Strengthen Tidal Marshes to Provide Ecological and Community Resilience**
- 6.4 Manage Shoreline Stabilization with Nature-based Features**
- 6.5 Manage Coastal Beaches and Dunes to Reduce Erosion and Storm Damage**
- 6.6 Reduce Flood Risk to Existing Buildings and Infrastructure**
- 6.7 Make Smarter and More Coordinated Investments in Coastal Resilience**
- 6.8 Share Financial Responsibility for Resilience**
- 6.9 Support and Incentivize Movement to Safer Areas**

Workgroup Evolution

Workgroups are established by partners to focus on membership-identified priorities.

Initial Workgroups

- Science
- Communications
- Implementation



Revised Workgroups after NJCRC Established

- Municipal Essential Actions
- State Actions
- Ecosystem Restoration & Science



Post EO89 Workgroups

- Municipal Actions
- State Actions



Current Workgroups

- Technical Assistance Coffee Chats and Directory
- Ecological Restoration & Science
- Beneficial Use Learning Network
- Coastal Habitat and Aquatic Resource Research Monitoring (CHARRM)
- Municipal
- Conference Planning – March 12-14, 2024 @ Monmouth University
- NJPACT REAL Comment – NJCRC Consensus Statement

Technical Assistance for Coastal Municipalities



Technical Assistance Directory

- Directory of resilience information and services provided by NJCRC partners
- Connects coastal leaders and stakeholders with professionals and resources that can aid in resilience planning and implementation
- Directory is located at: nj-crc.org/home

Technical Assistance Directory

The NJCRC network of partners works directly with coastal communities to make resilience a priority by raising awareness, identifying challenges, and implementing solutions. This Technical Assistance Directory is designed to help coastal stakeholders like public officials and residents find and connect with professionals who can assist with resilience planning and implementation across a broad range of topics. Select a resilience topic below to view NJCRC partners who offer technical assistance related to that topic. You can also [download the entire Technical Assistance Directory here](#).

Community & Land Use Planning

[View Directory](#)

Construction

[View Directory](#)

Ecological Design & Techniques

[View Directory](#)

Engineering Design & Techniques

[View Directory](#)

Floodplain & Stormwater Management

[View Directory](#)

Grants & Funding

[View Directory](#)

Hazard Preparedness & Mitigation

[View Directory](#)

Monitoring

[View Directory](#)

Outreach & Education

[View Directory](#)

Permitting

[View Directory](#)

Physical & Ecological Monitoring

[View Directory](#)

Policy & Legal

[View Directory](#)

Technical Assistance Coffee Chats

Expect the next Coffee Chat in May 2024!



TECHNICAL ASSISTANCE COFFEE CHAT FOR COASTAL COMMUNITIES

SEPT 17 | 9-10 AM | ZOOM

The NJ Coastal Resilience Collaborative (NJCRC) is a network of professionals that can help communities take resilience action.

Hear from the NJDEP about their Local Planning for Climate Change Toolkit	Voice your community's resilience needs and concerns	Learn about technical assistance offered by the NJCRC network
---	--	---

TECHNICAL ASSISTANCE COFFEE CHAT FOR NEW JERSEY COASTAL COMMUNITIES

DEC 3 | 10 – 11 AM | ZOOM

The NJ Coastal Resilience Collaborative (NJCRC) is a network of professionals that can help communities take resilience action.

Hear from Municipal Resilience Professionals on Project Planning & Implementation	Network with other Municipal and Local Officials on Resilience Implementation Needs	Voice Your Community's Needs for Assistance in Implementing Projects
---	---	--

Coffee Chats

The views expressed during Technical Assistance Coffee Chats are the presenter's own and do not reflect the official policies or positions of the New Jersey Coastal Resilience Collaborative or any of its organizational partners.



A Model Climate Vulnerability Assessment for Municipalities

Recorded Jan. 23, 2024

Community Standards for Resilient, Ecological and Accessible Design



<https://nj-crc.org/coffee-chats>

Ecological Restoration & Science Workgroup

- **(Re)Formed in 2020**
- **Provide input to CERAP - Coastal Ecological Restoration and Adaptation Plan (CERAP) Project**
 - NJDEP & Rutgers University
 - Develop Tools for ID & prioritization of locations for restoration, enhancement, or preservation (high-level)
- **Tasks**
 - Compiled Attendee list for project workshops across 6 regions of NJ (multi-sector)
 - Procuring information related to thresholds for Issues of Concern that restorations would mitigate



ERSW Products

NEW JERSEY RESTORATION NEWS

NJ COASTAL RESILIENCE COLLABORATIVE: ECOLOGICAL RESTORATION & SCIENCE WORK GROUP

HIGHLIGHTING RESTORATION ACTIVITIES, OPPORTUNITIES, AND RESEARCH IN THE GREATER NEW JERSEY REGION

VOLUME 1, JUNE 2021

MISSION STATEMENT

The NJ CRC Ecological Restoration & Science Work Group is a community of practice with the aim of providing critical inquiry and reflection related to restoration activities, in order to build a shared identity and develop our collective understanding over time

NEW PROJECT ANNOUNCEMENTS

REGIONAL SHELL RECYCLING

The American Littoral Society (ALS), partnered with the Barnegat Oyster Collective, was recently awarded a NOAA Saltonstall-Kennedy grant for "Promoting the Resurgence of the New Jersey Oyster Through Shell Recycling". This effort expands ALS's Operation Oyster and "Shuck it Don't Chuck it" shell recycling programs. Contact: alek@littoralsociety.org

The Partnership for the Delaware Estuary (PDE), in collaboration with the Philadelphia Water Department (PWD), is establishing a Philadelphia oyster shell recycling and outreach program. Funding was provided through PA DEP's Growing Greener program, and will complement PDE's Delaware shell recycling program. Contact: shouboullis@delawareestuary.org

FRESHWATER MUSSELS & LIVING SHORELINES

In April 2021, PDE and PWD installed an array of oyster shell along the Schuylkill River at Bartram's Garden in Philadelphia to test configuration effects on freshwater mussel and SAV habitat parameters (Fig. 1). Results will inform future living shoreline designs. Funding provided by National Fish and Wildlife Foundation and PA Coastal Zone Management program. Contact: jmoody@delawareestuary.org



Figure 1: Recycled oyster shell gabbions to help restore freshwater mussel beds at Bartram's Garden along the Schuylkill River in Philadelphia, PA.

NJ DEP REFERENCE WETLAND TOOL

A new Reference Wetland Tool for NJ tidal wetlands was developed by Riparia at Penn State and NJDEP. Data from the National Wetland Condition Assessment (NWCA); Mid-Atlantic Coastal Wetland Assessment (MACWA); Ecological Integrity Assessment (EIA); among others are summarized in the tool, displaying the range in condition for tidally influenced wetlands (freshwater, brackish, saline) across the state. The tool is now live and displays information about wetlands of varying conditions as well as those that are considered to be reference standard— sites least disturbed and in best condition. <https://tools.cei.psu.edu/wetlands/njdep>

PROJECT UPDATES

THE NEW JERSEY COASTAL ECOLOGICAL RESTORATION AND ADAPTATION PLAN (CERAP)

CERAP's call for areas of concern and project nominations to help identify locations for future restoration, enhancement, or preservation is still open. To nominate an area or input a pending or completed project please visit: <https://nj.gov/dep/climatechange/njcerap.html>

- Vision for a searchable document Hub
- Based on New Jersey Yards Framework
- Requires redesign of existing NJCRC website
- **New Website coming in 2024**

Select a Region ▾ 2

- Ridge & Valley - RV (382)
- Highland - H (391)
- Piedmont - P (403)
- Coastal Plain - CP (401)

Special Ecoregions ▾ 2

Plant Type ▾

Native Plants Only ▾ 2

Bloom Color ▾

Bloom Time ▾

Deer Resistance ▾ 2

Attracts Wildlife ▾ 2

Light Requirements ▾ 2

Soil Type ▾ 2

Soil pH ▾ 2

Soil Moisture ▾ 2

Drought Tolerance ▾ 2

Salt Tolerance ▾ 2

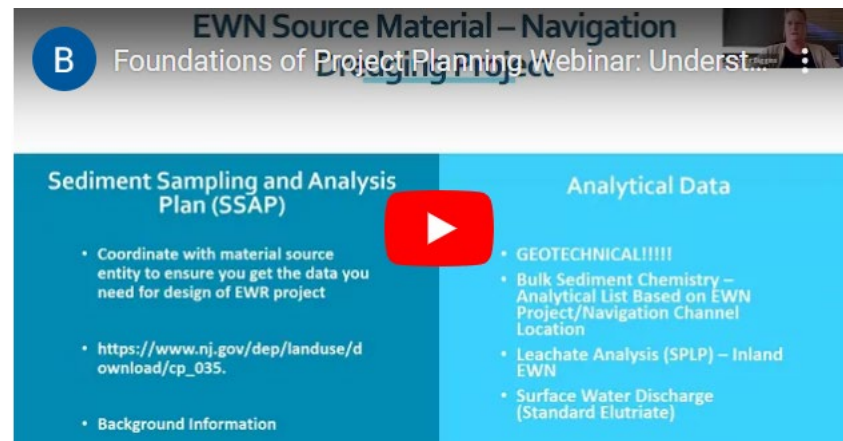
Beneficial Use Learning Network (BULN) Workgroup

- Initially created by TNC and US Fish & Wildlife as an outcome of a Delaware/New Jersey workshop on marsh restoration needs
- Multiagency interdisciplinary community of practice
 - focused on knowledge transfer and advancing the innovative practice of **beneficial use of dredge material for tidal marsh restoration**
- Became WG in June 2022



BULN Activities

- **Convening Webinars to facilitate knowledge** transfer between practitioners, regulators, and navigation managers who have completed projects and those who may be planning, implementing, or reviewing projects
- **Developing a Guidance Document** on the state of the science and best practices to build stakeholders' capacity and enable consistent siting, design, implementation, and monitoring of marsh-forward restoration projects



The screenshot shows a video player interface for a webinar recording. The title bar reads "EWN Source Material – Navigation Foundations of Project Planning Webinar: Understanding...". Below the title bar, there is a table of contents with two columns: "Sediment Sampling and Analysis Plan (SSAP)" and "Analytical Data". A red play button is overlaid on the table of contents.

Sediment Sampling and Analysis Plan (SSAP)	Analytical Data
<ul style="list-style-type: none">• Coordinate with material source entity to ensure you get the data you need for design of EWR project• https://www.nj.gov/dep/landuse/download/cp_035• Background Information	<ul style="list-style-type: none">• GEOTECHNICAL!!!!• Bulk Sediment Chemistry – Analytical List Based on EWN Project/Navigation Channel Location• Leachate Analysis (SPLP) – Inland EWN• Surface Water Discharge (Standard Elutriate)

Webinar recordings can be found on NJCRC website:

<https://nj-crc.org/home>

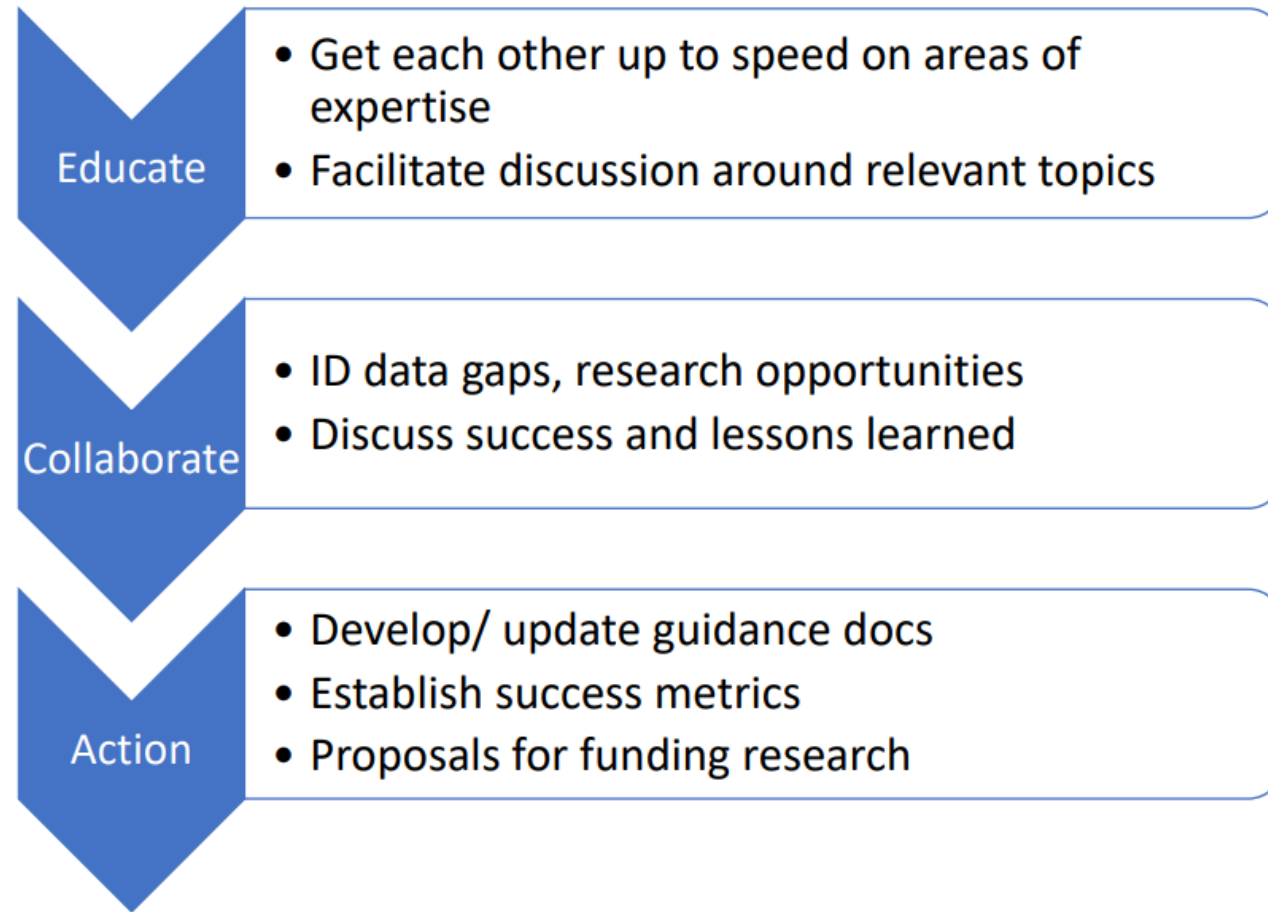
Coastal Habitat & Aquatic Resource Research and Monitoring CHARRM

Resource Managers + Restoration Practitioners + Researchers

Tackle issues related to coastal habitat restoration
and the resources impacted by restoration



CHARRM Workflow



Next Steps: Convene an In-Person meeting to begin a regulatory guidance document

SAV/ Seagrasses

- Jan 26th ***Seagrasses and SAV: Biology and Basics***
- Basic SAV biology in Barnegat Bay, the Delaware River and Delaware back bays. History, extent, restoration efforts, monitoring work around SAV.

- Feb 23rd ***Seagrasses and SAV: Regulations and Management***
- Resource agency /regulatory considerations

Living Shorelines and Shoreline Protection

- April 25th ***Living Shorelines: Biology and Basics***
- Biology and basics, common tactics, issues with shoreline armoring, ecology of the intertidal, tools guides and resources, engineering considerations

- May 25th ***Living Shorelines Case Studies and Lessons Learned***
- Overview of case studies on monitoring, adaptive mgmt, and lessons learned from takeaways that can apply to policy and research.

- June 22nd ***Living Shorelines: New Projects and Novel Tactics***
- Projects in the works/ being planned and novel tactics, opportunities for research, regulatory agency feedback discussion

Marsh Restoration

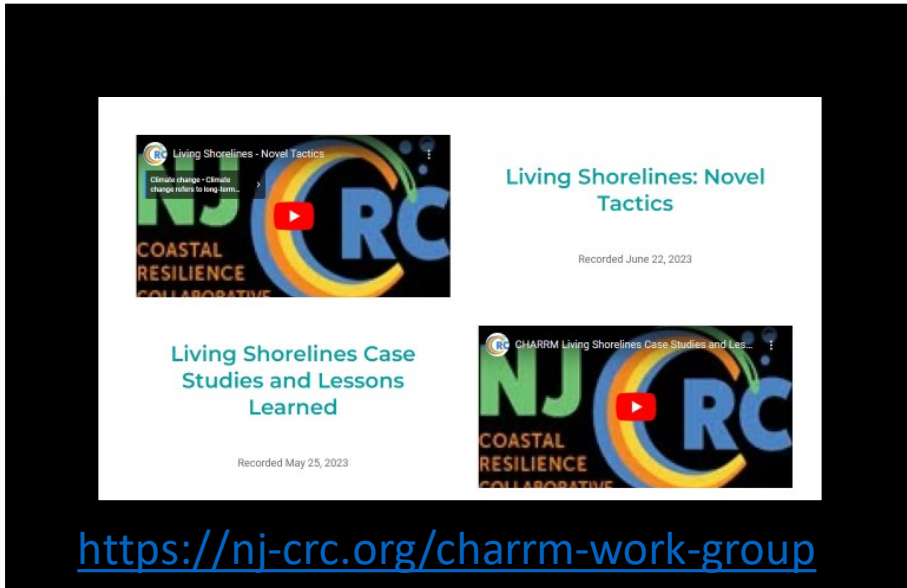
- July 27th ***Marsh Restoration in our Region: Biology and Basics***
- Basic marsh biology, intro on tactics: sediment enhancement methods, ditch remediation, runneling, hydrological improvements,

- Aug 24th ***Marsh Restoration Case Studies and Lessons Learned***
- Summary of results from past projects, lessons learned, adaptive mgmt. Key takeaways that can apply to policy and research.

- Sept 28th ***New Marsh Restoration Projects and Novel Tactics***
- Projects in the works, novel tactics being planned, opportunities for research, regulatory feedback discussion

- This fall: CHARRM x BULN in the works

CHARRM Webinars: Past & Future



<https://nj-crc.org/charrm-work-group>

Our Newest Workgroup!

A multi-sector workgroup aims to identify and help overcome municipal obstacles to resilience in NJ's coastal communities.

2024 Goals:

Goal 1: Outreach to Coastal Municipalities to expand & engage NJCRC membership.

Goal 2: Automate notices from NJCRC to go to municipal contact list.

Goal 3: Help develop content for the NJCRC/NJDEP conference in March.

Goal 4: Identify municipal obstacles and inhibitions to resilience planning.

Goal 5: Provide content to NJCRC newsletter.

2024 NJ Coastal & Climate Resilience Conference

- ❖ Over 250 Participants
- ❖ Sample of Sessions:
 - 5 sessions
 - Municipal Support for Resilience Planning
 - 2 sessions:
 - Climate Resilience
 - 3 sessions:
 - Climate Resilient Transportation



Save the Date

2024 New Jersey Coastal & Climate Resilience Conference
Adapting to Change – Creating Resilient Communities

March 12-14, 2024 | Monmouth University

Join state and regional leaders to chart a course for increased resilience of communities and ecosystems in the face of rising sea levels, more intense storms, and extreme heat.

Scan QR or visit nj-crc.org to take our event survey. Questions? Email njcrc@njseagrant.org.

NJ CRC
COASTAL RESILIENCE COLLABORATIVE

 NEW JERSEY DEPARTMENT OF ENVIRONMENTAL PROTECTION

<https://nj-crc.org/2024-conference>

Where We're Headed:



- New Website
 - Searchable Regional Resource Document Hub
 - Searchable Technical Assistance Directory
- Reorganizing Leadership
 - Moving towards 501c3 with Executive Director
- Continued Funding through NJ Sea Grant
 - Moving towards a self-sustained Funding Stream
- Increased Visibility and Engagement in Resilience Work
 - NJDEP's NOAA CRRC (Climate Resilience Regional Challenge) Level II Proposal
 - "Regional Collaborative"
 - Establishment of "Regional Coordinator" for Design Pipeline housed in NJCRC

Summary

NJCRC Mission: Foster sustainable and resilient coastal communities and ecosystems

Partnerships from ALL Sectors!

- Think Tank - Advance or create specific resilience tools, guidance, recommendations, communication and information dissemination
- Understand and Amplify the work of individual partners
- Reduce duplication of efforts

NJCRC provides a Collective Voice

- Voice of the many speaks louder than the individual alone
- Topical Workgroups; Bi-annual Full Partnership Meetings

Connection to Coastal Communities and Stakeholders

- Technical Assistance Coffee Chats, workshops, webinars, meetings
- Provide input to resilience projects through advisory committee participation
- Technical Assistance Directory



Join Us!



For more information contact
NJCRC support staff:

Laura Kerr

Stevens Institute of Technology
lkerr@stevens.edu

Tom Herrington

Monmouth University
therring@monmouth.edu

Dr. Jun Cheng

Kean University
jucheng@kean.edu



[Home](#) [Our Partners](#) [Technical Assistance](#) [Videos](#) [Partner Login](#)



New Jersey Coastal Resilience Collaborative

nj-crc.org/home

